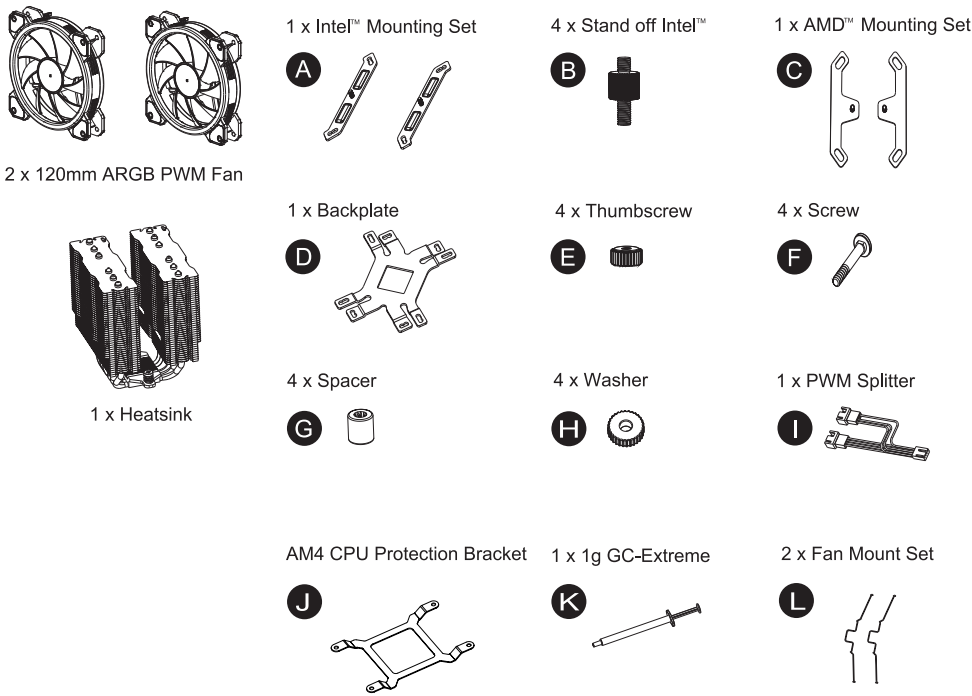
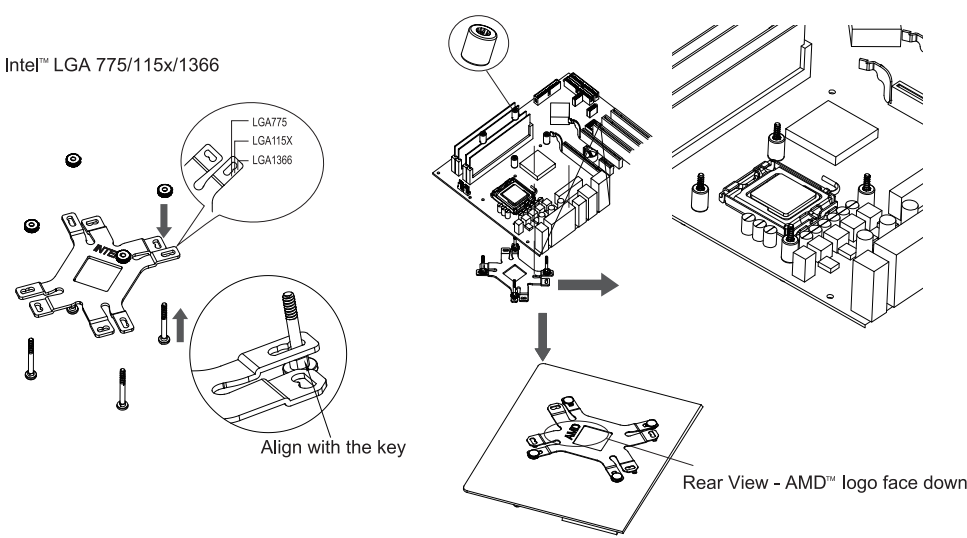


QUICK START GUIDE - Intel™ version

A Installation Parts

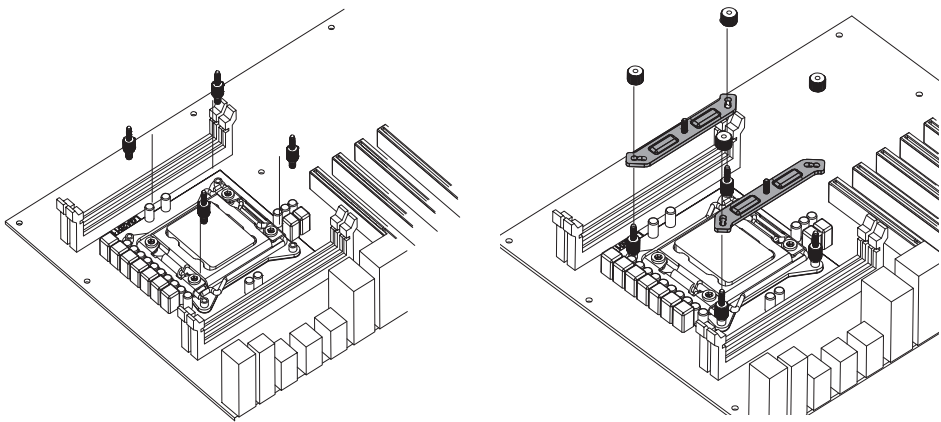


B Installation Instructions

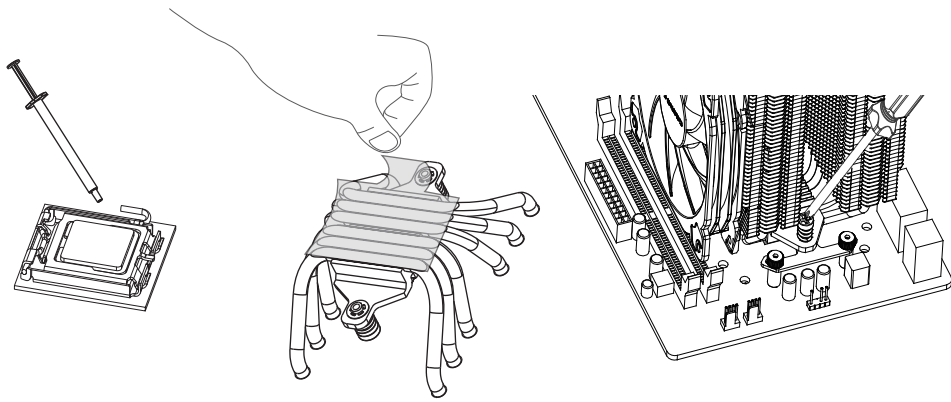


1. Insert 4 x Screw F into the screw holes of Universal Backplate D and fasten 4 x Washer H as shown.
2. Insert the Universal Backplate assembly from the motherboard backside and put 4 x Spacer G onto 4 x Screw F.

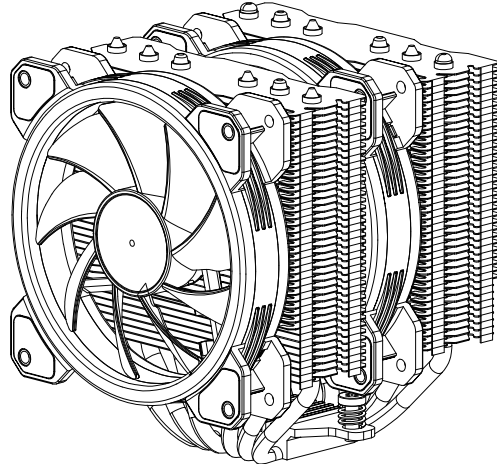
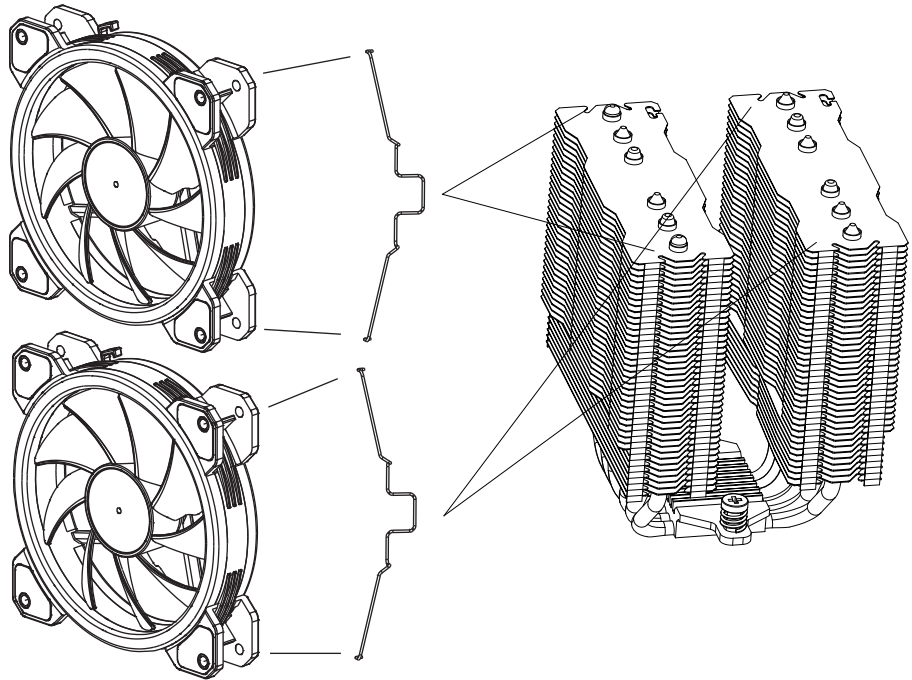
C Installation Instructions



D Installation Instructions



E Installation Instructions



**Limits of Warranty:**  
Warranty coverage does not include the following:  
- A faulty product that leads to harm or damage to other products  
- Damage of product as a result of other product components  
- Incorrect method of operation or use of the product not for the intended use  
- Any form of alteration to the original product  
- Inability to install the product as a result of incompatibility with other components.

The Specifications are subject to change without notice.  
Please consult our website for further information:  
[www.gelidsolutions.com](http://www.gelidsolutions.com)

**Disclaimer:**  
In no event shall GELID Solutions its directors or employees be liable for any indirect damages, incidental or consequential damages arising from any defect or error in this manual or product.

© Copyright 2021 All rights reserved by GELID Solutions Limited  
All Brand names and Trademarks are the properties of their respective owners.