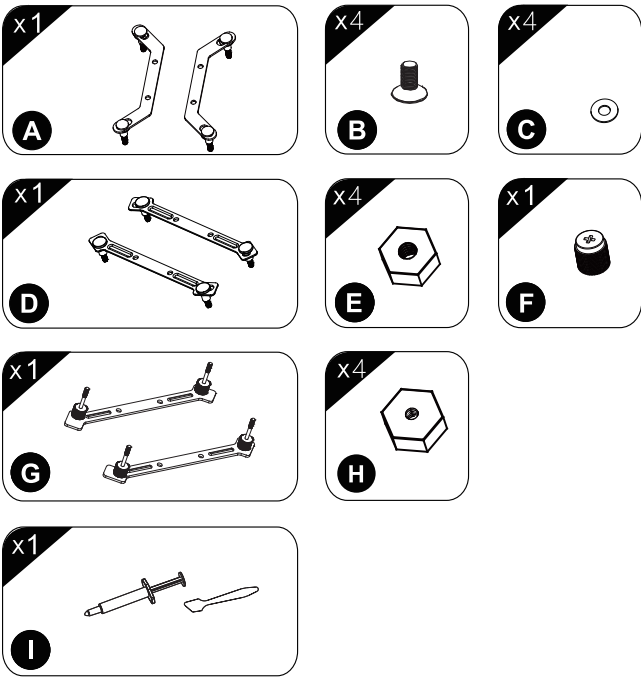
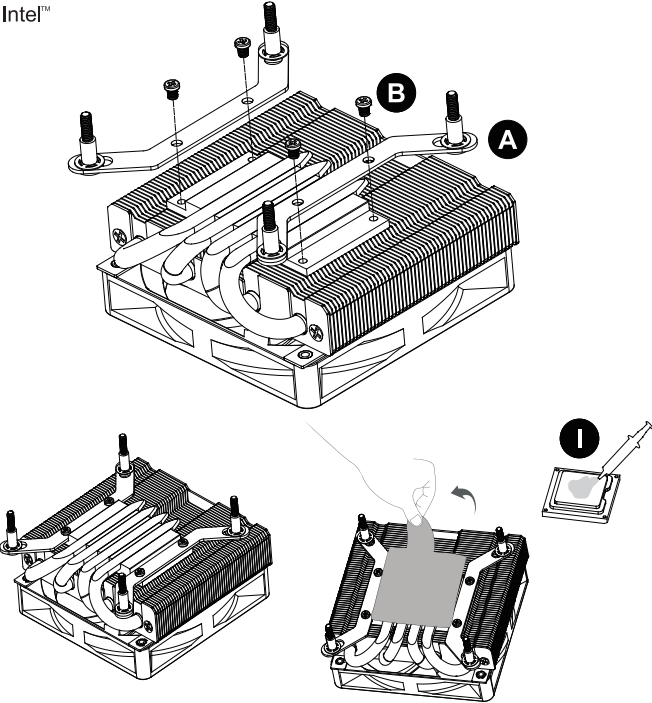


QUICK START GUIDE

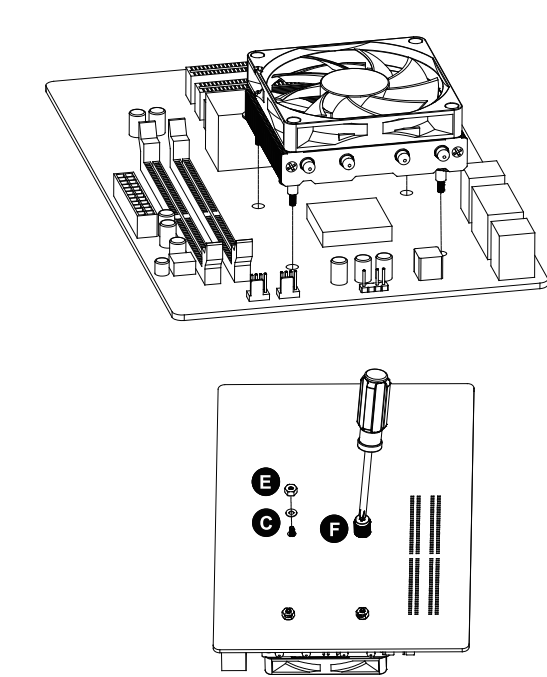
A Installation Parts



B Installation Instructions

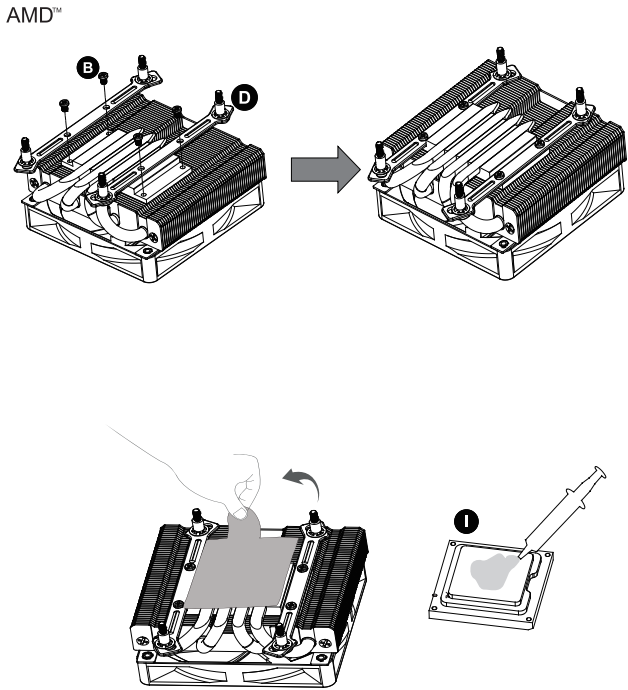


C Installation Instructions

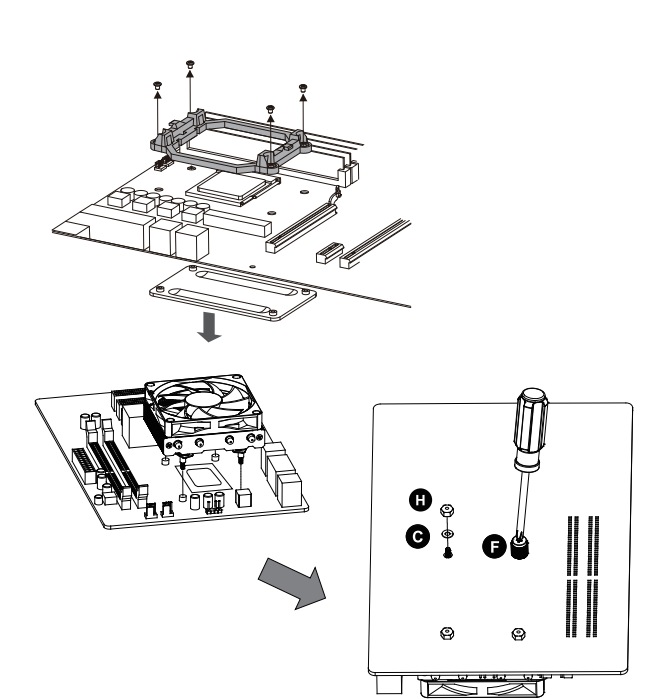


*For easier installation, you may need to remove the motherboard from your PC first.

D Installation Instructions

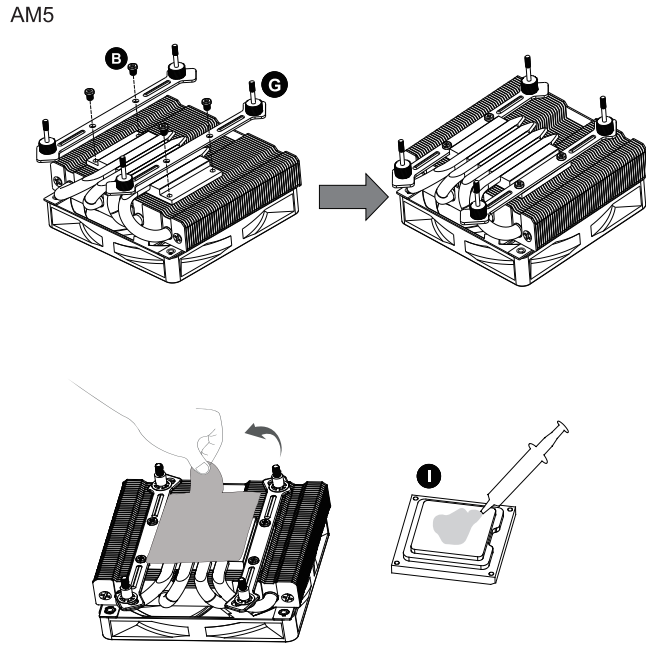


E Installation Instructions

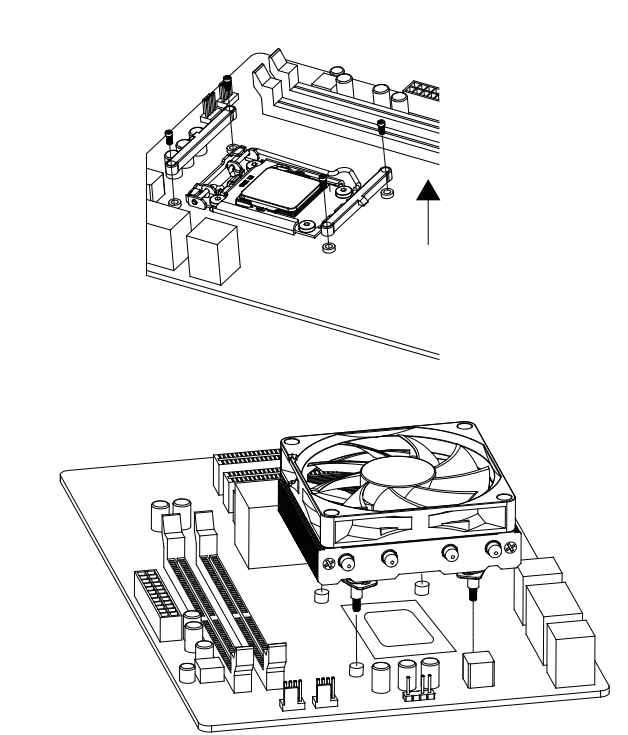


*For easier installation, you may need to remove the motherboard from your PC first.

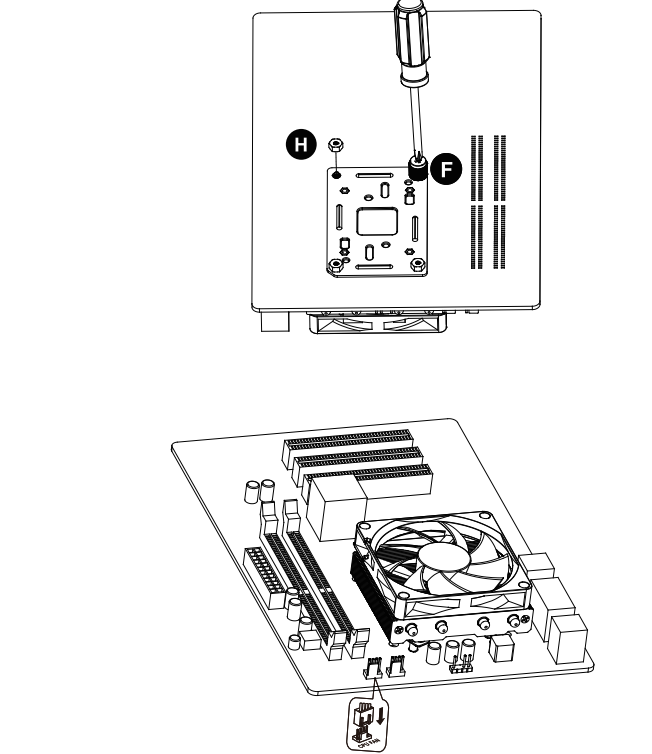
F Installation Instructions



G Installation Instructions



H Installation Instructions



*For easier installation, you may need to remove the motherboard from your PC first.

Limits of Warranty:
Warranty coverage does not include the following:
- A faulty product that leads to harm or damage to other products
- Damage of product as a result of other product components
- Incorrect method of operation or use of the product not for the intended use
- Any form of alteration to the original product
- Inability to install the product as a result of incompatibility with other components.

The Specifications are subject to change without notice.
Please consult our website for further information:
www.gelidsolutions.com

Disclaimer:
In no event shall GELID Solutions its directors or employees be liable for any indirect damages, incidental or consequential damages arising from any defect or error in this manual or product.

© Copyright 2023 All rights reserved by GELID Solutions Limited
All Brand names and Trademarks are the properties of their respective owners.