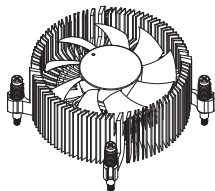


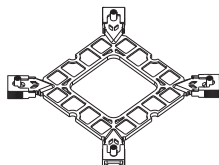
QUICK START GUIDE

A Installation Parts

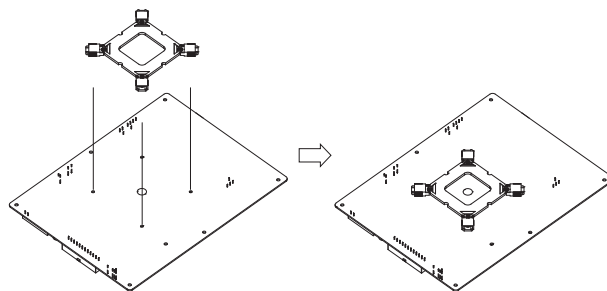
A 1 x POLAR 2 Heatsink



B 1 x Backplate

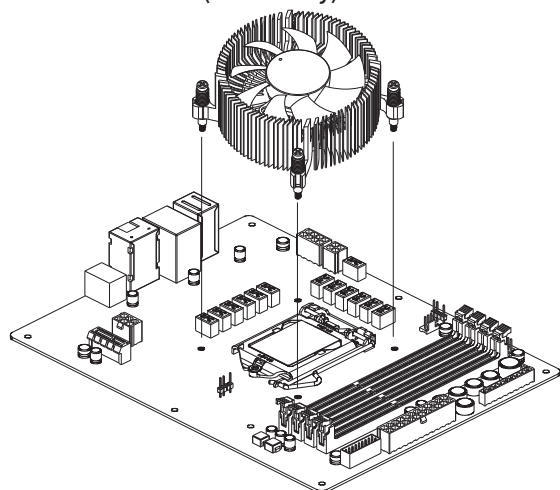


B Installation Instructions (INTEL™ only)



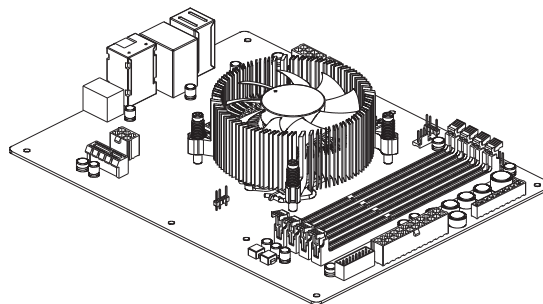
Insert the Backplate B onto the motherboard backside.

C Installation Instructions (INTEL™ only)



Install the Heatsink A on top of Motherboard and fasten 4 x Screw in the Heatsink A.

D Installation Instructions (INTEL™ only)



Limits of Warranty:

Warranty coverage does not include the following:

- A faulty product that leads to harm or damage to other products
- Damage of product as a result of other product components
- Incorrect method of operation or use of the product not for the intended use
- Any form of alteration to the original product
- Inability to install the product as a result of incompatibility with other components.

The Specifications are subject to change without notice.

Please consult our website for further information:

www.gelidsolutions.com

Disclaimer:

In no event shall GELID Solutions its directors or employees be liable for any indirect damages, incidental or consequential damages arising from any defect or error in this manual or product.

© Copyright 2022 All rights reserved by GELID Solutions Limited

All Brand names and Trademarks are the properties of their respective owners.