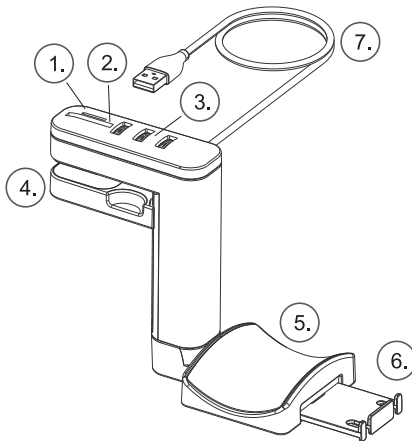


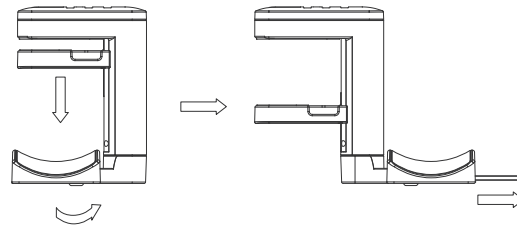
QUICK START GUIDE

A Installation Parts

1. TF Card Slot
2. SD Card Slot
3. USB Slot(s)
4. Desk Clip
5. Headset Seat
6. Cable Management
7. USB cable

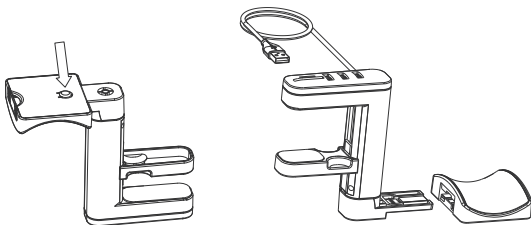


B Installation Instructions



1. Put down the (4) Desk Clip to fit your desk.
2. Rotate the (5) Headset Seat to your desired angle.
3. Pull out the (6) Cable Management for your USB or 3.5mm cable.
4. Plug in the USB connector of the (7) USB cable into your PC.

C Installation Instructions



5. (Optional) Removing the (5) Headset Seat - pressing the button on the bottom.
6. Pull out the (5) Headset Seat.

Limits of Warranty:

Warranty coverage does not include the following:

- A faulty product that leads to harm or damage to other products
- Damage of product as a result of other product components
- Incorrect method of operation or use of the product not for the intended use
- Any form of alteration to the original product
- Inability to install the product as a result of incompatibility with other components.

The Specifications are subject to change without notice.

Please consult our website for further information:

www.gelidsolutions.com

Disclaimer:

In no event shall GELID Solutions its directors or employees be liable for any indirect damages, incidental or consequential damages arising from any defect or error in this manual or product.

© Copyright 2023 All rights reserved by GELID Solutions Limited

All Brand names and Trademarks are the properties of their respective owners.